

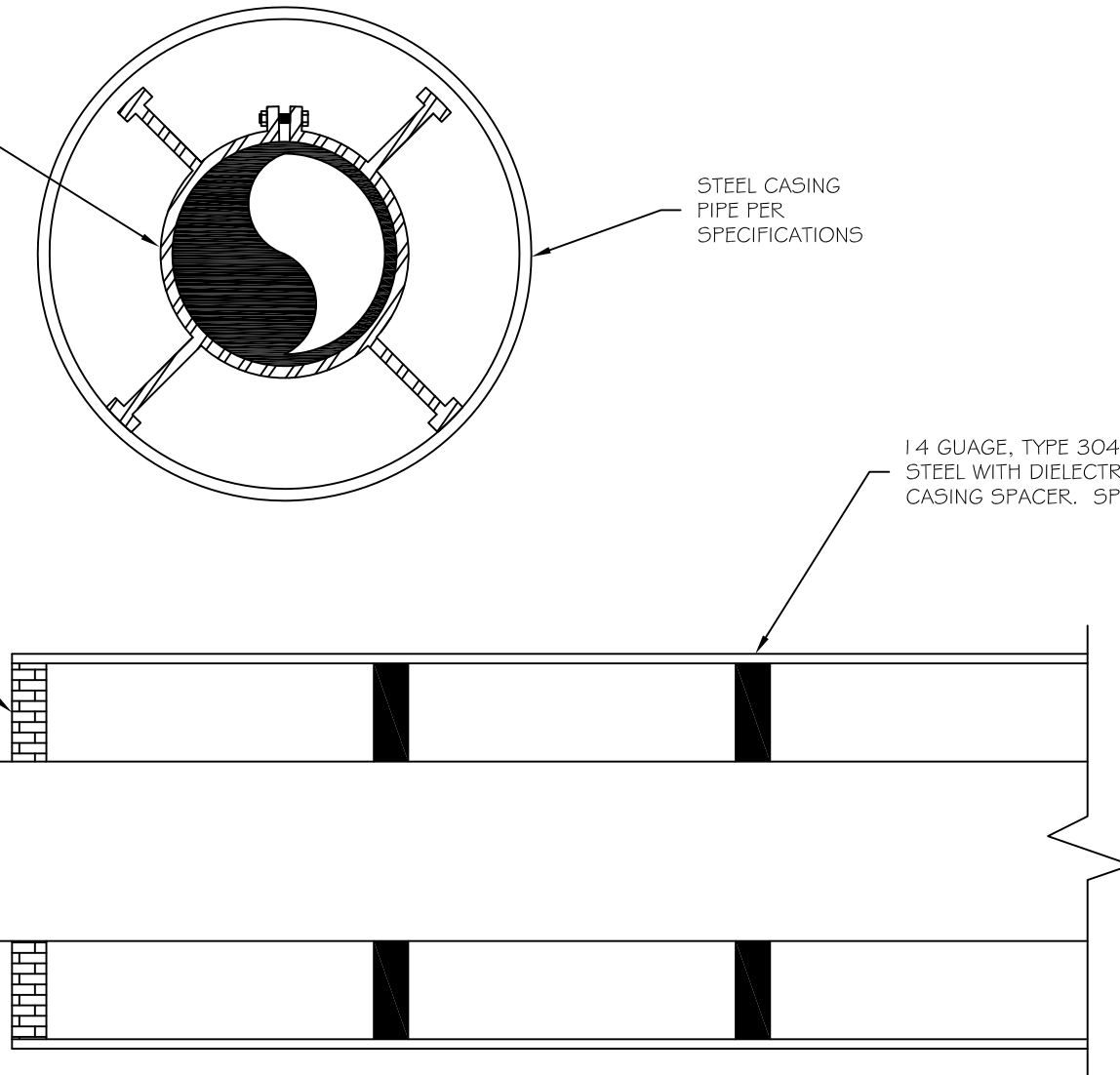
PROPOSED SANITARY SEWER

STEEL CASING  
PIPE PER  
SPECIFICATIONS

1/4 GUAGE, TYPE 304 STAINLESS  
STEEL WITH DIELECTRIC INSULATOR  
CASING SPACER. SPACE AT 6' OC

MASONRY BULKHEAD  
AT BOTH ENDS OF CASING

RESTRAINED JOINT  
SEWER RATED DUCTILE IRON PIPE  
(MUST EXTEND 5' MIN.  
BEYOND CASING BOTH ENDS)



#	REVISED	DATE: 7/1/04	STANDARD DETAIL	WATER RESOURCES DEPARTMENT CITY OF MONROE, NC	
	1/26/17	SCALE: NONE			
		DRAWN BY: EZ	CASING PIPE DETAIL	FILE NO. 12.11.00	DIV. NO. 12
		CHECKED BY: DSW			
		APPROVED BY: DSW			