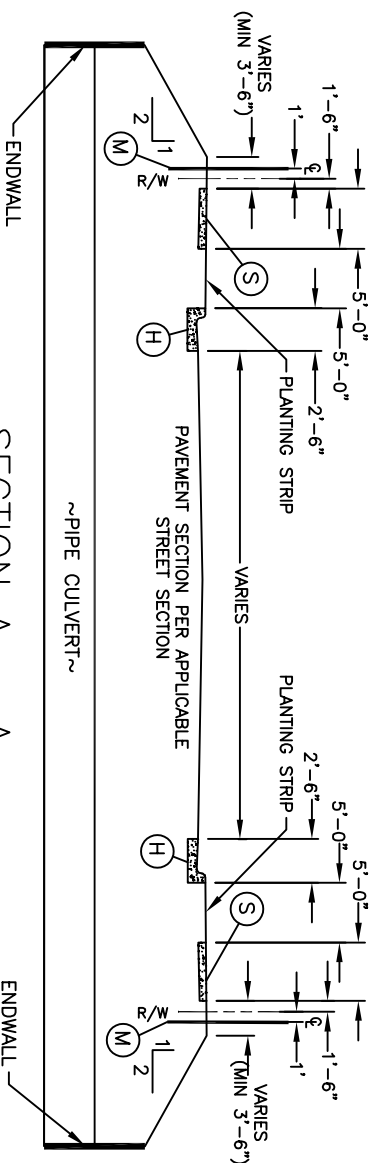
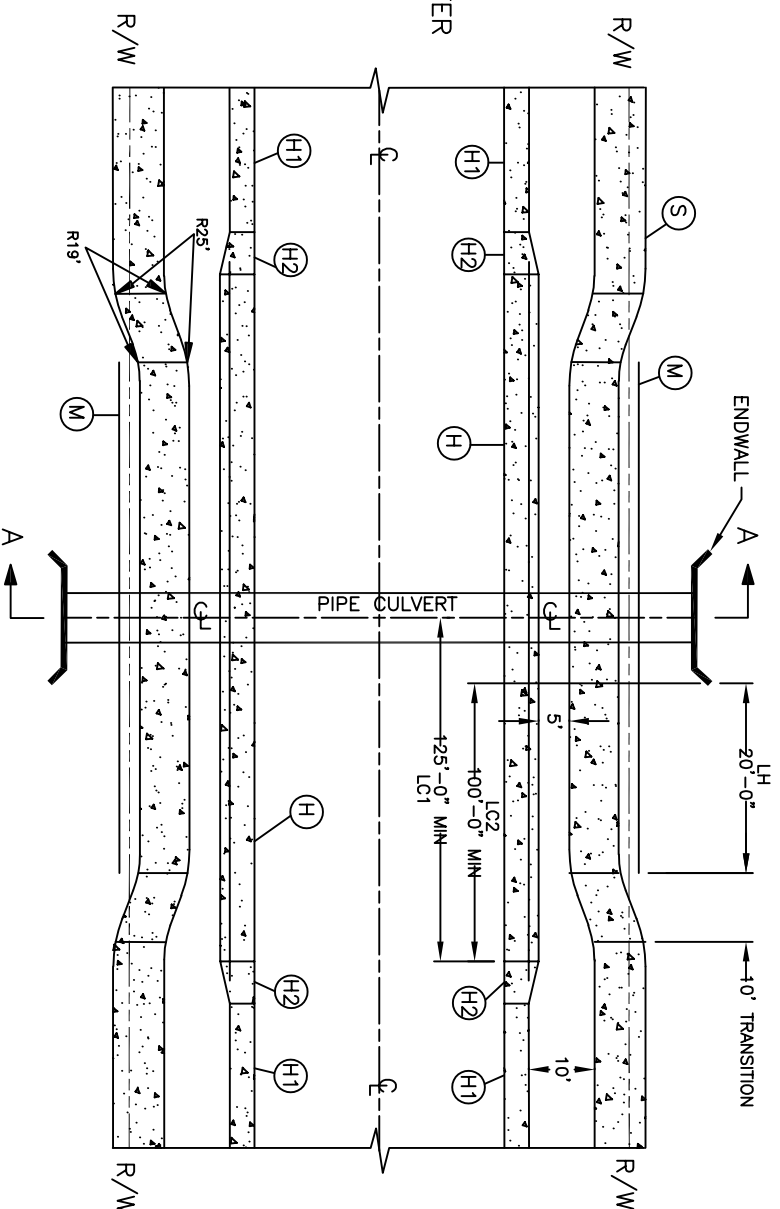


- (H) 2'-6" CURB AND GUTTER, STD 02.02.01
- (M) SAFETY RAIL, STD 02.03.03 & 02.03.04
- (S) 5'-0" SIDEWALK, STD 02.03.01, NOTE 3
- (H1) 2'-0" VALLEY GUTTER, STD 02.02.01
- (H2) CURB TRANSITION 2'-6" CURB AND GUTTER TO 2'-0" VALLEY GUTTER, STD 02.02.04



SECTION A - A

- LH\* = DISTANCE FROM END OF WINGWALL TO END OF SAFETY RAIL
- LC1 = DISTANCE FROM C/L OF CULVERT TO END OF 2'-6" CURB AND GUTTER
- LC2\* = DISTANCE FROM END OF WINGWALL TO END OF 2'-6" CURB AND GUTTER
- \* LH AND LC2 TO BE MEASURED FROM THE OUTSIDE OF THE NEAREST WALL OF THE CULVERT BARREL



REVISIONS	
NO.	DATE

DESCRIPTION



## CULVERT CROSSING

CITY OF MONROE	
UNION COUNTY	NORTH CAROLINA
PREPARED BY: ENGINEERING DEPARTMENT	

FILE: I:/Maps-Details/Detail Manual/Details	
DRAWN BY: KMM	DATE: 03-31-25
CHECKED BY: SAM	SCALE: N.T.S.
DETAIL 02.03.05A	