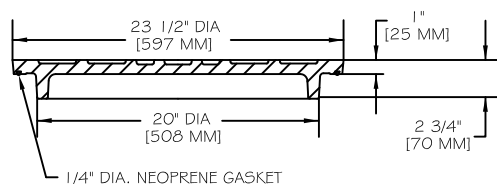
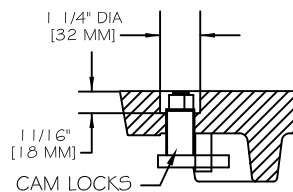


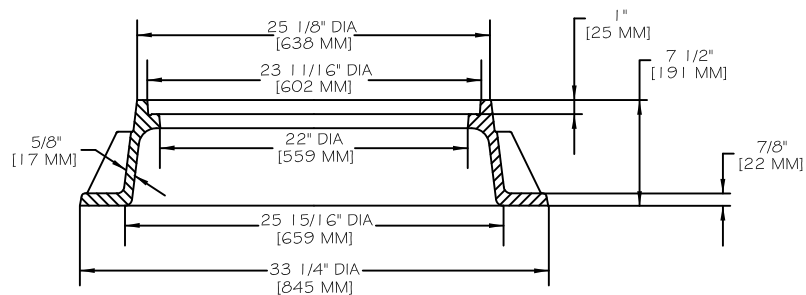
BOTTOM VIEW



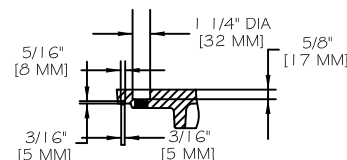
COVER SECTION



CAM LOCK DETAIL



FRAME SECTION



CAM HOLE AND GASKET GROOVE DETAIL

NOTES:

1. FRAME AND COVER SHALL BE CAST IRON, FREE OF SAND HOLES; NO PLUGGING PERMITTED.
2. CASTING SHALL BE COATED WITH COAL TAR EPOXY WHILE HOT.
3. FRAME SHALL INCLUDE FOUR DRILLED HOLES FOR EXPANSION ANCHORS THROUGH MANHOLE CONE.
4. SLIGHT VARIATION IN DIMENSIONS NOT CRITICAL TO INTERCHANGABILITY WILL BE ACCEPTABLE.
5. METAL RINGS SHALL BE BOLTED INTO ADJUSTING RINGS WITH 1/2" DIAMETER KWIK BOLT STUD ANCHOR SYSTEM.

#	REVISED	DATE: 3/31/05	STANDARD DETAIL	WATER RESOURCES DEPARTMENT CITY OF MONROE, NC	
	1/26/17	SCALE: NONE			
		DRAWN BY: JPH	WATERTIGHT MANHOLE FRAME AND COVER DETAIL	FILE NO. 12.06.02	DIV. NO. 12
		CHECKED BY: DSW			
		APPROVED BY: DSW			