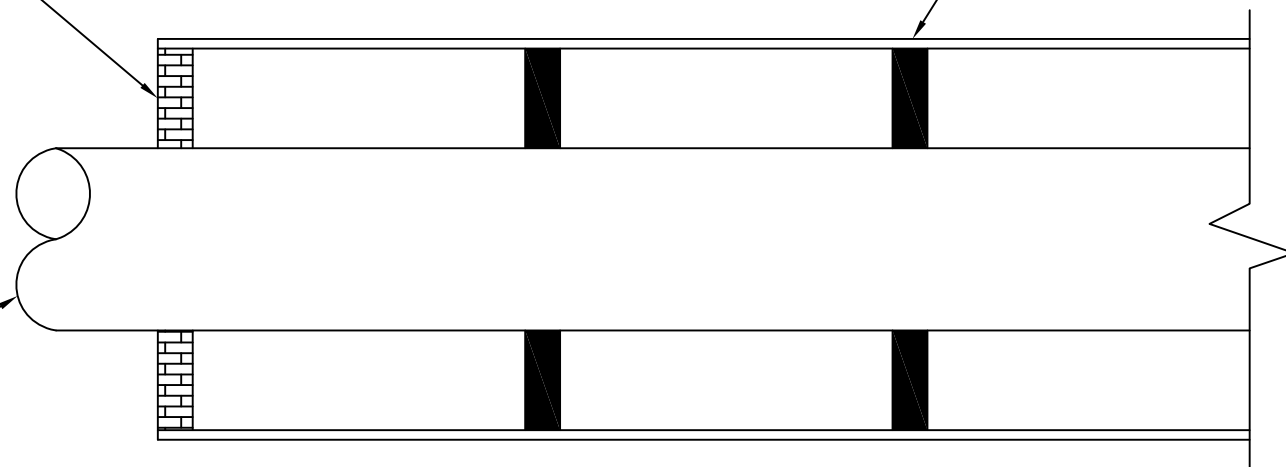


1 4 GUAGE, TYPE 304 STAINLESS
STEEL WITH DIELECTRIC INSULATOR
CASING SPACER. SPACE AT 6' OC

MASONRY BULKHEAD
AT BOTH ENDS OF CASING

RESTRAINED JOINT
DUCTILE IRON WATER MAIN
(MUST EXTEND 5' MIN.
BEYOND CASING BOTH ENDS)



#	REVISED	DATE: 1/25/2017	STANDARD DETAIL	WATER RESOURCES DEPARTMENT CITY OF MONROE, NC	
	1/25/17	SCALE: NONE			
		DRAWN BY: FS	CASING PIPE DETAIL	FILE NO. 10.19.00	DIV. NO. 10
		CHECKED BY: RKS			
		APPROVED BY: RKS			