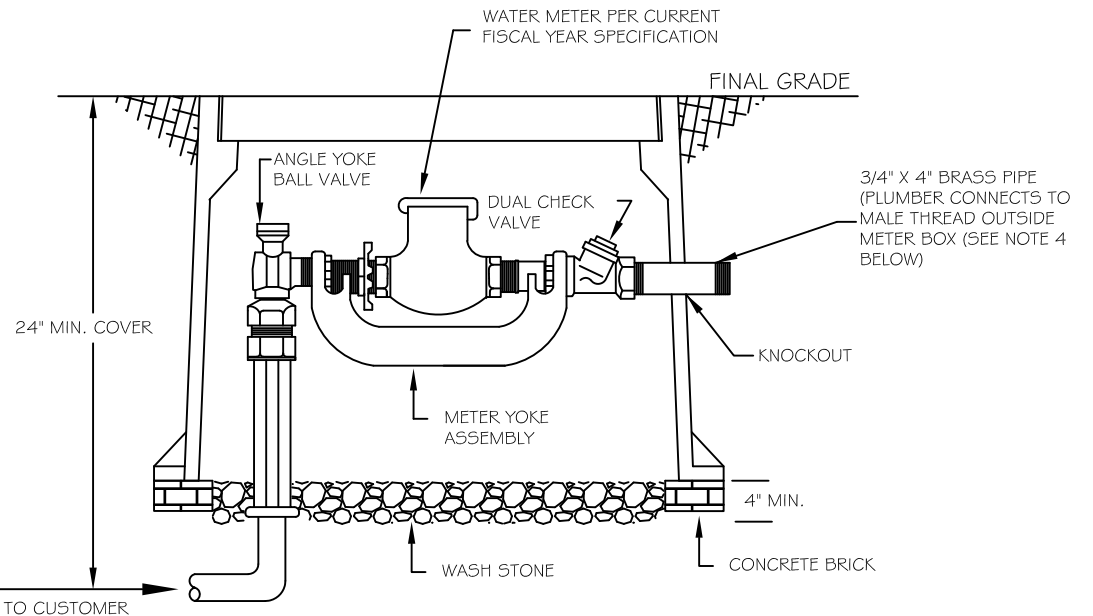
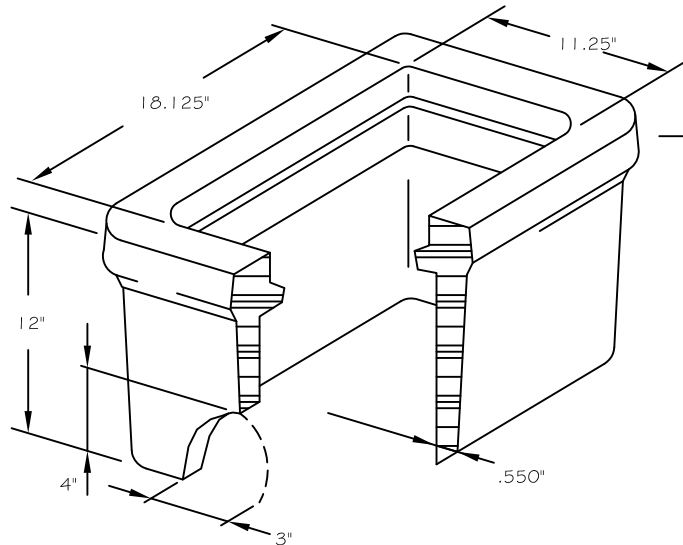


"CITY OF MONROE" AND "WATER" TO BE ENGRAVED ON TOP OF LID



- NOTES:
1. WATER METER TO BE INSTALLED BY CITY OF MONROE. SPECIFICATION IS AVAILABLE UPON REQUEST THROUGH THE WATER RESOURCES DEPARTMENT.
 2. CONTRACTOR SHALL USE ONE CONTINUOUS ROLL OF COPPER FROM TAP TO METER. NO SPLICING SHALL BE PERMITTED.
 3. FOR SUBDIVISIONS WITH SIDEWALKS, THE CONTRACTOR SHALL EXTEND COPPER TUBING AFTER THE METER BOX 2 FEET BEYOND ALL PROPOSED SIDEWALKS.
 4. ALL METER BOXES SHALL STRADDLE SERVICE LINE, NO DRILLED HOLES ARE ACCEPTABLE.

#	REVISED	DATE: 7/1/2004	STANDARD DETAIL	WATER RESOURCES DEPARTMENT CITY OF MONROE, NC	
1	4/11/2008	SCALE: NONE			
2	1/26/2017	DRAWN BY: SPT	3/4" AND 1" WATER METER DETAIL	FILE NO. 10.08.00	DIV. NO. 10
		CHECKED BY: RKS			
		APPROVED BY: RKS			