

# SCHEDULE OF MATERIALS

**WATER METER:** ALL METERS SHALL MEET THE CURRENT FISCAL YEAR BID SPECIFICATION USED FOR CITY METER PROCUREMENT. THE SPECIFICATION IS MADE AVAILABLE AT THE OFFICE OF THE WATER RESOURCES ENGINEERING MANAGER. THE SELECTION OF THE TYPE OF WATER METER SHALL BE AT THE APPROVAL OF THE ENGINEER BASED UPON CUSTOMER WATER DEMAND AND NEEDED FIRE FLOW.

**STRAINER:** ALL STRAINERS SHALL BE PROVIDED BY THE SAME MANUFACTURER AS THE WATER METER. THE STRAINER SHALL HAVE A REMOVABLE CAP ON A BLOW-OFF OUTLET WHICH SELF CLEANS THE SCREEN WHEN REMOVED.

**PIPE:** PRESSURE CLASS 250 DUCTILE IRON PIPE SATISFYING THE CITY OF MONROE STANDARD SPECIFICATIONS.

**FITTINGS:** STANDARD 125# FLANGED DUCTILE IRON

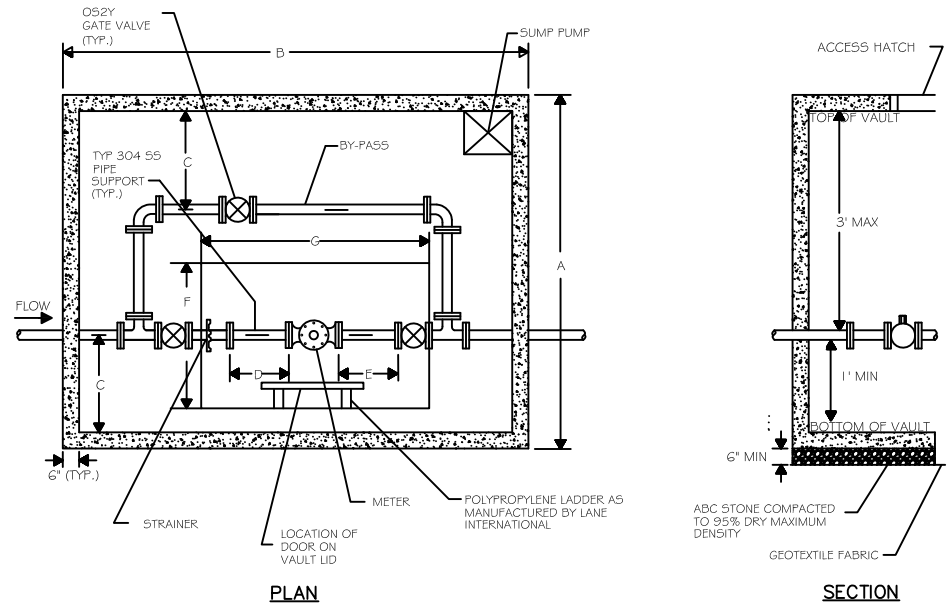
ALL PIPE AND FITTINGS SHALL BE PAINTED WITH AN APPROVED COATING SYSTEM (TNEMEC POTA-POX OR APPROVED EQUAL).

**OS&Y GATE VALVES:** ACCEPTABLE MANUFACTURERS ARE LISTED ON THE CITY OF MONROE APPROVED MATERIALS LIST. HANDWHEELS SHALL BE PAINTED WITH AN APPROVED COATING SYSTEM.

**ALUMINUM HATCH:** AS MANUFACTURED BY BILCO, HALLIDAY, OR EAST JORDAN IRON WORKS. NON-TRAFFIC AREAS SHALL HAVE A 300 PSF LOAD RATING.

## NOTES:

1. MINIMUM DIMENSIONS SHALL BE AS SHOWN ON DETAIL AND IN TABLE.
2. THE BACKFLOW PREVENTER SHALL BE FURNISHED BY THE CUSTOMER IN A SEPARATE VALVE ON THE CUSTOMER'S SIDE OF THE METER. REFER TO STANDARD DETAIL 10.16.00.
3. THE CONTRACTOR SHALL BE RESPONSIBLE FOR OBTAINING ALL NECESSARY PERMITS AND INSPECTIONS.
4. VAULT OPENING SHALL BE SIZED SO THAT A PERSON CAN READ THE METER REGISTER STANDING ON THE VAULT AND ALSO HAVE ROOM TO CLIMB DOWN THE INSTALLED LADDER. VAULT OPENING SHALL BE SIZED TO ALLOW EASY VERTICAL REMOVAL OF THE METER AFTER DISCONNECTION FROM THE PIPING. SEE TABLE. FOR 10-INCH AND 12-INCH METER, FURTHER REVIEW WILL BE REQUIRED BY THE WATER RESOURCES ENGINEERING MANAGER BEFORE APPROVAL.



VAULT DIMENSIONS (EXPRESSED AS A MINIMUM)							
METER SIZE	A	B	C	D	E	F	G
3 - INCH	5.0 FT	10.0 FT	2.0 FT	15"	9"	5.0 FT	5.0 FT
4 - INCH	5.0 FT	10.0 FT	2.0 FT	20"	12"	5.0 FT	5.0 FT
6 - INCH	6.0 FT	12.0 FT	2.5 FT	2.5 FT	18"	6.0 FT	6.0 FT
8 - INCH	6.0 FT	12.0 FT	2.5 FT	3.3 FT	2.0 FT	6.0 FT	6.0 FT
10 - INCH	12.0 FT	14.0 FT	3.0 FT	4.2 FT	2.5 FT	8.0 FT	8.0 FT
12 - INCH	12.0 FT	16.0 FT	3.0 FT	5.0 FT	3.0 FT	8.0 FT	8.0 FT

#	REVISED	DATE: 7/1/04	STANDARD DETAIL  3" - 10" WATER METER VAULT	WATER RESOURCES DEPARTMENT CITY OF MONROE, NC	
1	4/11/2008	SCALE: NONE		FILE NO. 10.10.00	DIV. NO. 10
2	11/1/2013	DRAWN BY: DSW			
3	11/5/2015	CHECKED BY: RKS			
3	1/25/2017	APPROVED BY: RKS			