

SCHEDULE OF MATERIALS

REDUCED PRESSURE ZONE BACKFLOW PREVENTER: 2"-3" WATTS MODEL 009, 4"-10" WATTS MODEL 957, OR APPROVED EQUAL.

PIPE: PRESSURE CLASS 350 DUCTILE IRON PIPE SATISFYING THE CITY OF MONROE STANDARD SPECIFICATION.

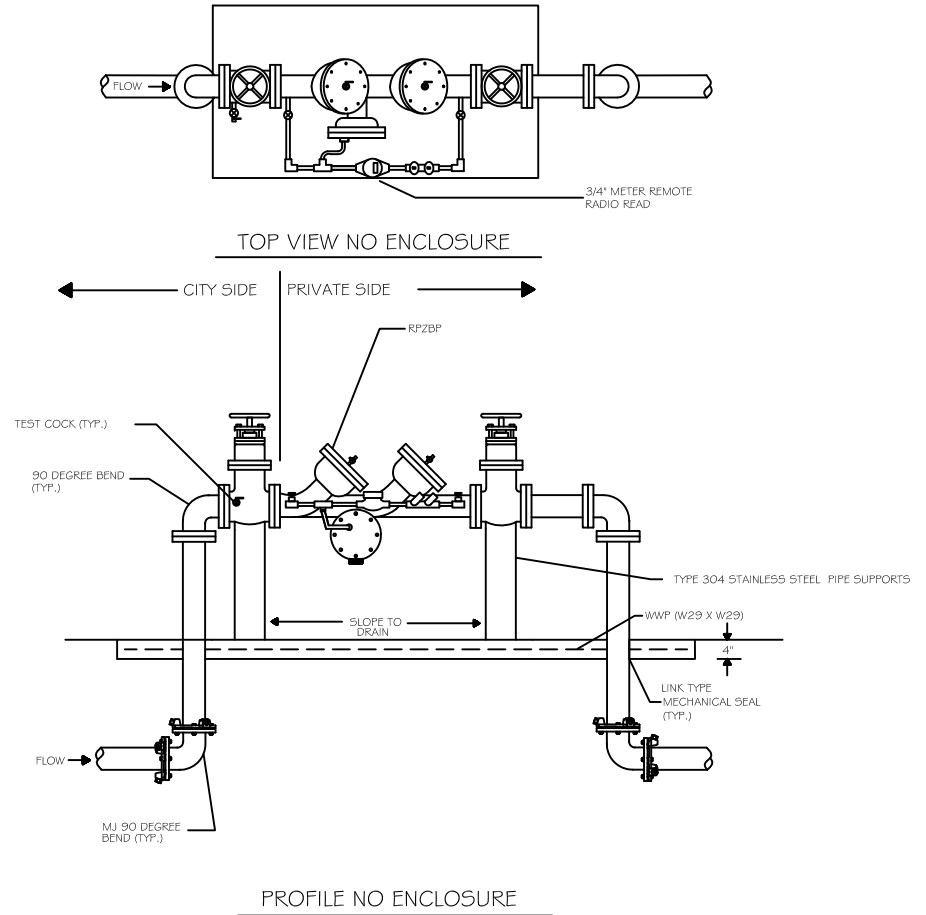
FITTINGS: STANDARD 125# FLANGED DUCTILE IRON PIPE

ALL PIPE AND FITTINGS SHALL BE PAINTED WITH AN APPROVED COATING SYSTEM (TNEMEC POTA-POX OR APPROVED EQUAL)

METER REMOVE RADIO READ: SHALL MEET THE CURRENT FISCAL YEAR BID SPECIFICATION. THE SPECIFICATION IS AVAILABLE AT THE OFFICE OF THE WATER RESOURCES ENGINEERING MANAGER.

NOTES

1. RDPZA SHALL BE INSTALLED ONLY FOR CUSTOMER APPLICATIONS APPROVED BY THE WATER RESOURCES ENGINEER.
2. THE CONTRACTOR SHALL BE RESPONSIBLE FOR OBTAINING ALL NECESSARY PERMITS AND INSPECTIONS.
3. THE CONTRACTOR SHALL BE RESPONSIBLE TO TEST THE RPZBP AND PROVIDE WRITTEN CERTIFICATION SIGNED BY A CERTIFIED TESTER OF PROPER OPERATION.
4. RDPZA SHALL BE LOCATED AWAY OR SUFFICIENTLY PROTECTED FROM VEHICULAR TRAFFIC, LAWN MOWERS OR OTHER FORESEEABLE OCCURRENCES ON THE PROPERTY THAT COULD CAUSE DAMAGE TO THE STRUCTURE.
5. ENCLOSURE SHALL BE ALUMINUM "HOT BOX" CAPABLE OF MAINTAINING A 40° FAHRENHEIT INTERIOR AMBIENT TEMPERATURE AS MANUFACTURED BY HUBBELL POWER OR APPROVED EQUAL. HEATING UNIT(S) AND CONVENIENCE OUTLET(S) TO BE PROVIDED BY THE MANUFACTURER.
6. DIMENSIONS OF "HOT BOX" CONTINGENT UPON LENGTH OF IMPROVEMENT. VERIFY SIZE OF "HOT BOX" FOR EQUIPMENT PROVIDED PRIOR TO ORDERING. ADEQUATE CLEARANCE FROM FLOORS, CEILINGS, AND WALLS MUST BE PROVIDED AS SPECIFIED BELOW:
 - A. ALL ASSEMBLIES SHALL BE INSTALLED WITH A CENTERLINE HEIGHT FROM 30-INCHES (MIN.) ABOVE THE ABOVE THE FLOOR.
 - B. ALL RPZ DEVICES MUST HAVE AN 18-INCH MINIMUM CLEARANCE BETWEEN THE BOTTOM OF THE RELIEF VALVE AND THE FLOOR.
 - C. A MINIMUM OF 12-INCHES OF CLEAR SPACE SHALL BE MAINTAINED ABOVE THE ASSEMBLY
 - D. A MINIMUM OF 30-INCHES OF CLEAR SPACE SHALL BE MAINTAINED BETWEEN THE FRONT SIDE OF THE DEVICE AND THE NEAREST WALL.
 - E. A MINIMUM OF 8-INCHES SHALL BE MAINTAINED FROM THE BACK SIDE OF THE DEVICE TO THE NEAREST WALL.
7. ENCLOSURE SHALL COME FURNISHED WITH WEATHER PROOF DRAIN PORTS SUFFICIENTLY SIZED TO HANDLE FULL FLOW DISCHARGE FROM THE RDPZA RELIEF VALVE DRAIN. TO BE SUPPLIED BY SAME MANUFACTURER.
8. ALL MATERIALS AND INSTALLATION OF ELECTRICAL WORK SHALL BE IN ACCORDANCE WITH THE NEC AND THE CITY OF MONROE CODES.



#	REVISED	DATE: 4/14/08	STANDARD DETAIL	WATER RESOURCES DEPARTMENT CITY OF MONROE, NC	
1	11/1/2013	SCALE: NONE			
2	11/5/2015	DRAWN BY: DSW	3" - 10" RPZBP DETAIL	FILE NO. 10.15.00	DIV. NO. 10
3	1/26/2017	CHECKED BY: RKS			
		APPROVED BY: RKS			