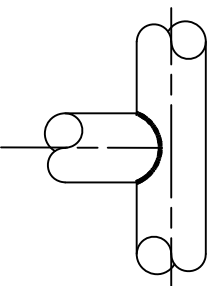
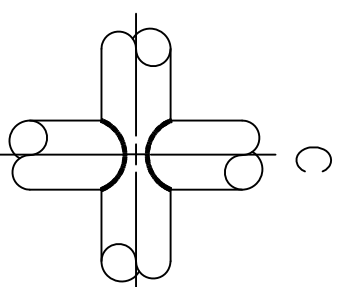


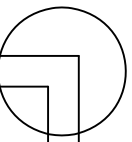
A



B



C



A

8

8

8

8

8

8

8

8

8

8

8

8

8

8

8

8

8

8

4'-6"

8'-0" MAX.

2'-0"

1'-6" MIN.

1'-

GENERAL NOTES:

1. ALL CONCRETE TO BE 3600 P.S.I. COMPRESSIVE STRENGTH.
 2. TYPE OF PIPE TO BE USED IS 1-5/8" MAX. O.D. BLACK IRON, LOW CARBON PIPE.
- ALL JOINTS TO HAVE A 1/2" FILLET WELD AT ALL JOINTS.
- AFTER INSTALLATION PAINT ASSEMBLY WITH BLACK ALL WEATHER ENAMEL.
- TO BE USED AS REQUIRED BY THE ENGINEERING DEPT.

APPROVED DATE _____

REVISIONS

NO.	DATE	DESCRIPTION



TYPICAL HANDRAIL

CITY OF MONROE
UNION COUNTY
NORTH CAROLINA
PREPARED BY:
ENGINEERING DEPARTMENT

FILE: I:/Maps-Details/Detail Manual/Details
DRAWN BY: JAM
CHECKED BY: JNL
DATE: 08-07-01
SCALE: N.T.S.
DETAIL 07.02.01