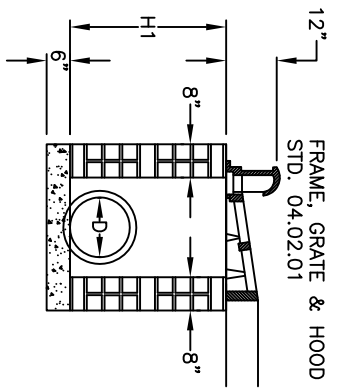
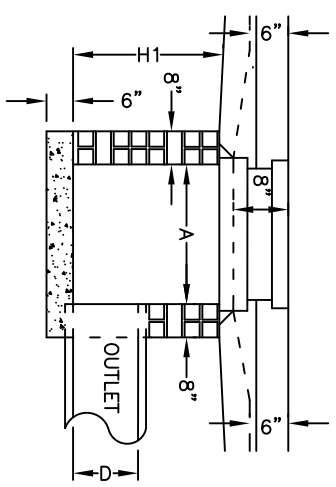


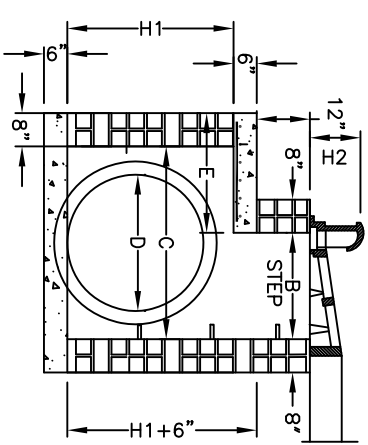
PLAN



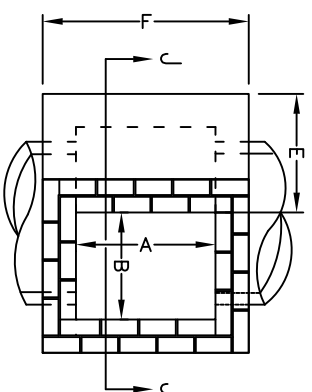
SECTION X-X



SECTION Y-Y

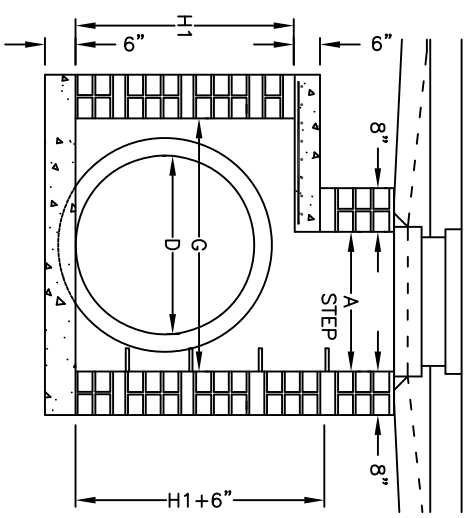


END ELEVATION/SECTION J-J
WHERE 30" TO 36" PIPE IS USED

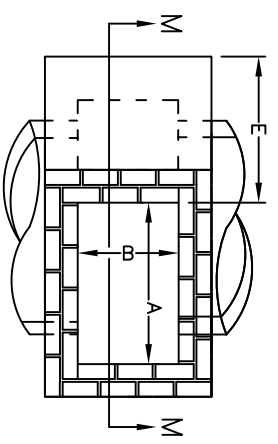


PLAN

- GENERAL NOTES:**
1. MORTAR JOINTS $1\frac{1}{2}$ " \pm $1\frac{1}{8}$ " THICK
 2. ALL CONCRETE TO BE 3600 P.S.I. COMPRESSIVE STRENGTH.
 3. PRECAST STRUCTURES MAY BE SUBSTITUTED AFTER APPROVAL BY ENGINEERING DIRECTOR.
 4. ALL CATCH BASIN OVER 3'-6" IN DEPTH SHALL BE PROVIDED WITH STEPS
 5. 1'-2" ON CENTERS. STEPS SHALL BE IN ACCORDANCE WITH STD. 12.07.00. ①
 6. CONCRETE BRICK MAY BE USED IN LIEU OF HARD COMMON CLAY BRICK.
 7. JUMBO BRICK WILL BE PERMITTED.
 8. FOR 8'-0" IN HEIGHT OR LESS USE 8" WALL. OVER 8'-0" IN HEIGHT USE 12" WALL TO 6'-0" FROM TOP OF WALL, AND 8" WALL FOR THE REMAINING 6'-0"
 9. FOR FRAME AND GRATE DETAIL SEE STANDARD 04.02.01 ; 04.02.02 ①
 10. ALL PIPE IN STORM DRAIN STRUCTURES SHALL BE STRUCK EVEN WITH THE INSIDE WALL, GROUDED AND BRUSHED SMOOTH.
 11. FOOT OF NUMBER 78M STONE CONTAINED IN A BAG OF POROUS FABRIC SHALL BE PLACED AT WEEP HOLE.
 12. BRICK SHALL BE BONDED WITH FULL HEADERS EVERY 3 COURSES.
 13. SEE STANDARD NUMBER 04.06.01 FOR PLACEMENT OF CATCH BASIN. ①



SIDE ELEVATION/SECTION M-M
WHERE 42" TO 54" PIPE IS USED



PLAN

REVISIONS		
NO.	DATE	DESCRIPTION
1	01/15	ADD REF. NO. FOR STANDARDS



BRICK CATCH BASIN
15" THRU 54" PIPE
(1 of 2)

CITY OF MONROE
UNION COUNTY
NORTH CAROLINA
ENGINEERING DEPARTMENT
PREPARED BY:

FILE: I:/Maps-Details/Detail Manual/Details	
DRAWN BY: JAM	DATE: 08-07-01
CHECKED BY: JNL	SCALE: N.T.S.
DETAIL 04.01.01	