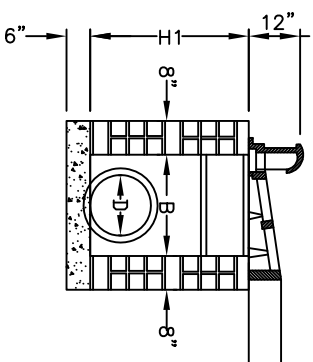
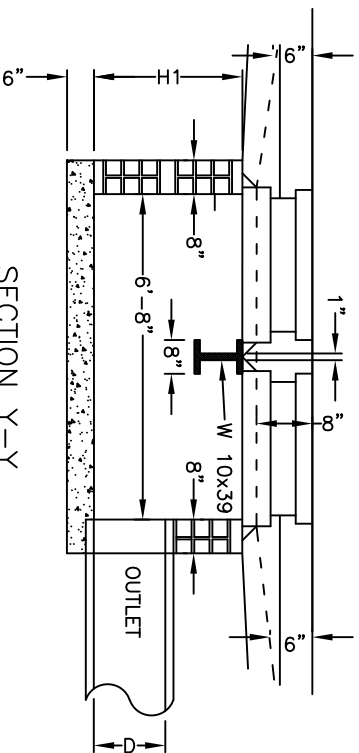


PLAN



SECTION X-X



SECTION Y-Y

DIMENSIONS OF BOX AND PIPE				
PIPE	SPAN	WIDTH	HEIGHT	W 10
D	A	B	MIN. H ¹	LENGTH
15"	3'-0"	2'-4"	2'-6"	2'-10"
18"	3'-0"	2'-4"	2'-10"	2'-10"
24"	3'-0"	2'-4"	3'-4"	2'-10"

- GENERAL NOTES:**
1. TWO 4"x 4"x 3/8" ANGLE IRONS MAY BE SUBSTITUTED FOR THE W10x39 BEAM.
 2. ALL CONCRETE TO BE 3600 P.S.I. COMPRESSIVE STRENGTH.
 3. MORTAR JOINTS SHOULD BE BETWEEN 3/8" TO 5/8" THICK.
 4. ALL CATCH BASINS OVER 3'-6" IN DEPTH SHALL BE PROVIDED WITH STEPS 1'-2" ON CENTERS BEGINNING 1'-2" FROM THE BOTTOM OF THE CATCH BASIN.
 5. CONCRETE BRICK MAY BE USED IN LIEU OF HARD COMMON CLAY BRICK.
 6. JUMBO BRICK WILL BE PERMITTED.
 7. FOR 8'-0" IN HEIGHT OR LESS USE 8" WALL, OVER 8'-0" IN HEIGHT USE 12" WALL TO 6'-0" FROM TOP OF WALL, AND 8" WALL FOR THE REMAINING 6'-0".
 8. FOR FRAME AND GRATE DETAIL SEE STANDARD 04.02.01.
 9. ALL PIPE IN STORM DRAIN STRUCTURE SHALL BE STRUCK EVEN WITH THE INSIDE WALL, GROUTED AND BRUSHED SMOOTH.
 10. WEEP HOLE(S) SHALL BE PLACED IN BACK WALL. A STONE DRAIN CONSISTING OF 1 (ONE) CUBIC FOOT OF NUMBER 78M STONE CONTAINED IN A BAG OF POROUS FABRIC SHALL BE PLACED AT EACH WEEP HOLE.

REVISIONS

NO.	DATE	DESCRIPTION
1	05/2008	REVISE NOTE 4



BRICK DOUBLE CATCH BASIN
15" THRU 24" PIPE

CITY OF MONROE
UNION COUNTY
NORTH CAROLINA
PREPARED BY:
ENGINEERING DEPARTMENT

FILE: I:/Maps-Details/Detail Manual/Details
DRAWN BY: JAM
DATE: 08-07-01
CHECKED BY: JNL
SCALE: N.T.S.
DETAIL 04.01.04