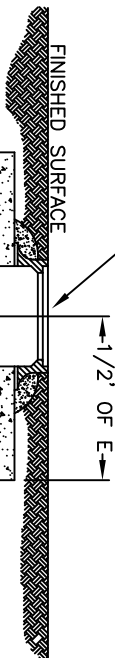
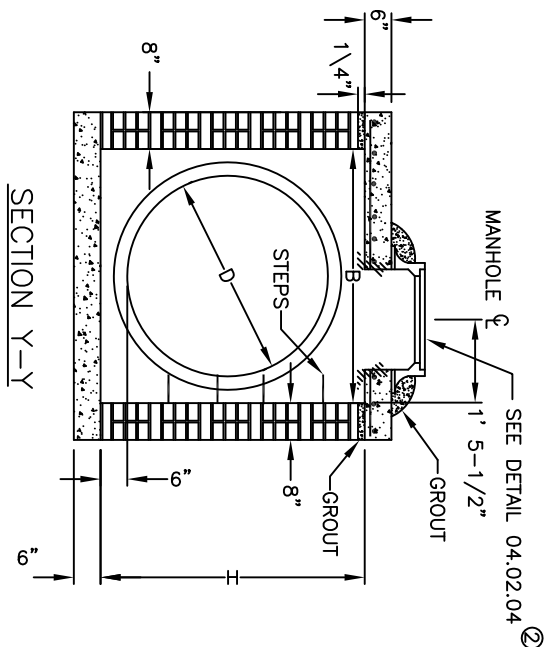
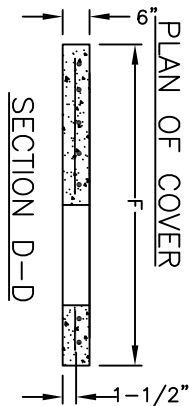
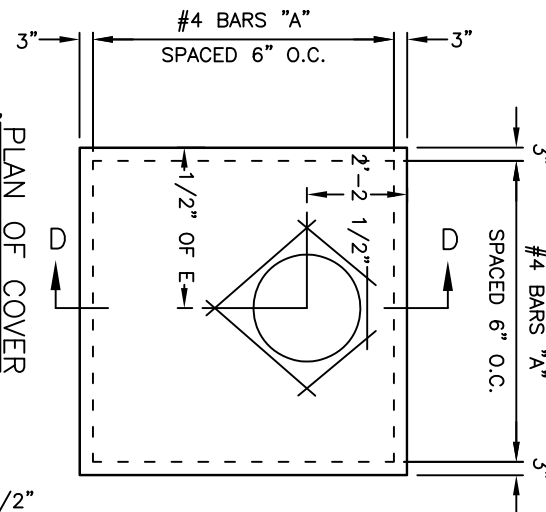


RING AND COVER
STD. 04.02.04



SECTION X-X

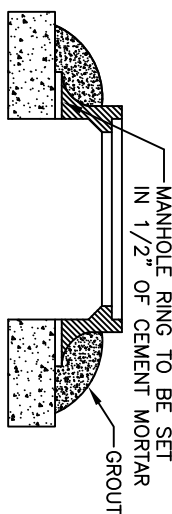


SECTION Y-Y

GENERAL NOTES:

1. ALL EXPOSED CONCRETE TO BE CHAMFERED 1"
2. ALL CONCRETE TO BE 3600 P.S.I.
3. ALL EXPOSED JOINTS SHALL BE CONCAVE TOOLED.
4. MORTAR JOINTS SHOULD BE BETWEEN 3/8" AND 5/8" THICK.
5. CONCRETE BRICK MAY BE USED IN LIEU OF HARD COMMON CLAY BRICK. JUMBO BRICK WILL BE PERMITTED.
6. FOR 8'-0" IN HEIGHT OR LESS USE 8" WALL. OVER 8'-0" IN HEIGHT USE 12" WALL TO 6'-0" FROM TOP OF WALL AND 8" WALL FOR THE REMAINING 6'-0".
7. ALL JUNCTION BOXES OVER 3'-6" IN DEPTH SHALL BE PROVIDED WITH STEPS 1'-2" ON CENTERS BEGINNING 1'-2" FROM THE BOTTOM OF THE CATCH BASIN.
8. FOR RING AND COVER DETAIL SEE STD. 04.02.04 ②
9. ALL PIPE IN STORM DRAIN STRUCTURE TO BE STRUCK EVEN WITH THE INSIDE WALL, GROUTED AND BRUSHED SMOOTH.
10. WEEP HOLES SHALL BE PLACED IN BACK WALL. A STONE DRAIN CONSISTING OF 1 (ONE) CUBIC FOOT OF NUMBER 78M STONE CONTAINED IN A BAG OF POROUS FABRIC SHALL BE PLACED AT EACH WEEP HOLE.
11. ALL SLABS SHALL BE FORMED.

DIMENSIONS OF BOX AND PIPE						REINF. BARS	
PIPE	SPAN	WIDTH	HEIGHT	SIZE			
D	A	B	H	E	F	NO.	LENGTH
42"	4'-8"	4'-8"	4'-9"	6'-0"	6'-0"	22	5'-9"
48"	5'-0"	6'-0"	5'-3"	6'-4"	6'-4"	24	6'-1"
54"	5'-6"	5'-6"	5'-9"	6'-10"	6'-10"	26	6'-7"
60"	6'-0"	6'-0"	6'-3"	7'-4"	7'-4"	28	7'-1"
66"	6'-6"	6'-6"	6'-9"	7'-10"	7'-10"	30	7'-7"



RING DETAIL ②

REVISIONS

NO.	DATE	DESCRIPTION
1	05/2008	REVISE NOTE 7
2	01/2015	ADD NO. FOR REF STANDARD



BRICK JUNCTION BOX
42" THRU 66" PIPE

CITY OF MONROE
UNION COUNTY
NORTH CAROLINA

ENGINEERING DEPARTMENT

FILE: I:\Maps-Details\Detail Manual\Details
DRAWN BY: JAM
CHECKED BY: JNL
DATE: 08-07-01
SCALE: N.T.S.
DETAIL 04.01.07