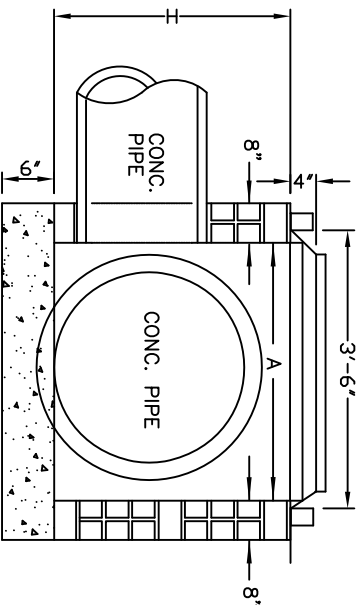
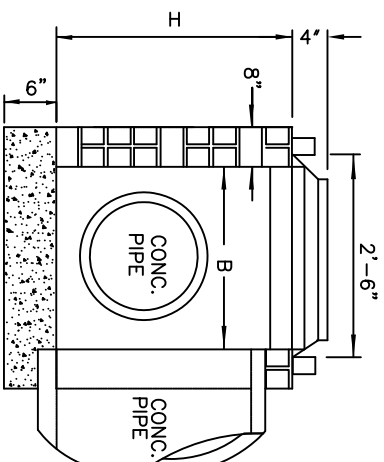


WITH COPING REMOVED

- GENERAL NOTES:**
1. ALL DROP INLETS OVER 3'-6" IN DEPTH TO BE PROVIDED WITH STEPS 1'-2" ^① ON CENTERS BEGINNING 1'-2" FROM THE BOTTOM OF THE CATCH BASIN.
 2. ALL CONCRETE TO BE 3600 P.S.I. COMPRESSIVE STRENGTH.
 3. MORTAR JOINTS SHOULD BE BETWEEN 3/8" AND 5/8" THICK.
 4. BRICK MASONRY DROP INLET NOT TO BE USED IN LOCATIONS SUBJECT TO TRAFFIC.
 5. JUMBO BRICK WILL BE PERMITTED. CONCRETE BRICK OR 4" SOLID CONCRETE BLOCKS MAY BE USED IN LIEU OF HARD COMMON CLAY BRICK.
 6. FOR 8'-0" IN HEIGHT OR LESS USE 8" WALL OVER 8'-0" IN HEIGHT USE 12" WALL TO 6'-0" FROM TOP OF WALL AND 8" WALL FOR THE REMAINING 6'-0". QUANTITIES TO BE ADJUSTED ACCORDINGLY.
 7. FOR FRAME AND GRATE DETAIL SEE STD. NO. 04.02.03. ^②
 8. ALL PIPE IN STORM DRAIN STRUCTURE TO BE STRUCK EVEN WITH THE INSIDE WALL, GROUTED AND BRUSHED SMOOTH.
 9. ALL SLABS SHALL BE FORMED.



SECTION X-X



SECTION Y-Y

DIMENSIONS AND QUANTITIES

DIMENSIONS OF BOX & PIPE				CONC.		TOTAL BRICK MASONRY		DEDUCTIONS	
PIPE	SPAN	WIDTH	HEIGHT	IN BASE	C.U. YDS	PER FT. HEIGHT	BRICK COPING	MIN.	FOR ONE PIPE
B	A	B	H (MIN.)					H	C.M. R.C.
12"	3'-0"	2'-0"	2'-8"	0.267	0.313	0.037	0.871	0.020	0.032
15"	/	/	3'-0"	/	/	/	0.976	0.031	0.047
18"	/	/	3'-5"	/	/	/	1.106	0.044	0.065
24"	3'-0"	2'-0"	4'-0"	0.267	0.313	0.037	1.289	0.078	0.113

REVISIONS

NO.	DATE	DESCRIPTION
1	05/2008	REVISE NOTE 1
1	01/2015	CORRECT DETAIL NO FOR NORTH CAROLINA



BRICK DROP INLET

CITY OF MONROE
UNION COUNTY
NORTH CAROLINA

PREPARED BY:

ENGINEERING DEPARTMENT

FILE: I:/Maps-Details/Detail Manual/Details

DRAWN BY: JAM DATE: 08-07-01

CHECKED BY: JNL SCALE: N.T.S.

DETAIL 04.01.08