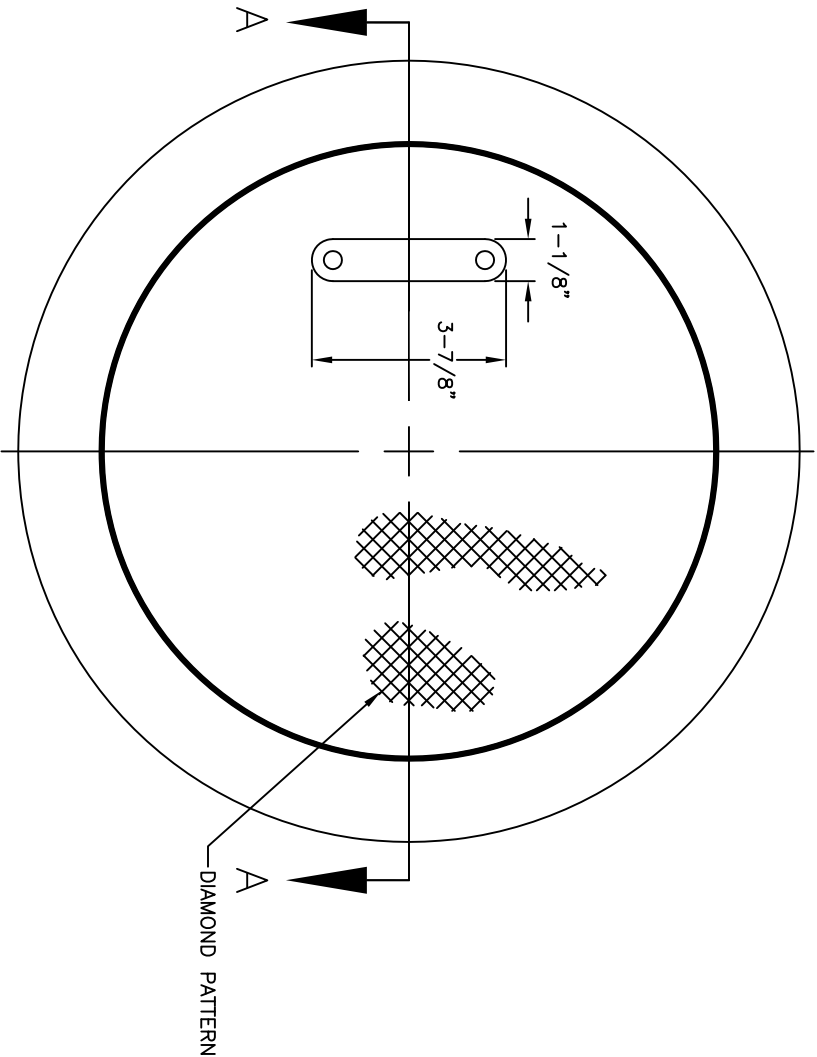
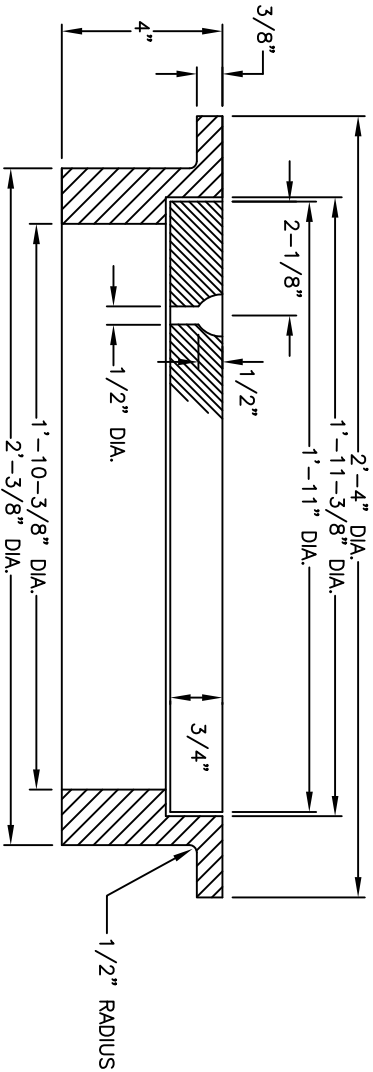


MINIMUM WEIGHT	
RING	96 LBS
COVER	86 LBS



PLAN VIEW



SECTION A-A

APPROVED DATE _____

REVISIONS	
NO.	DATE DESCRIPTION



MANHOLE RING AND COVER
FOR SLAB TYPE CATCH BASIN

CITY OF MONROE	
UNION COUNTY	
NORTH CAROLINA	
PREPARED BY:	
ENGINEERING DEPARTMENT	

FILE: I:/Maps-Details/Detail Manual/Details	
DRAWN BY: JAM	DATE: 08-07-01
CHECKED BY: JNL	SCALE: N.T.S.
DETAIL 04.02.04	