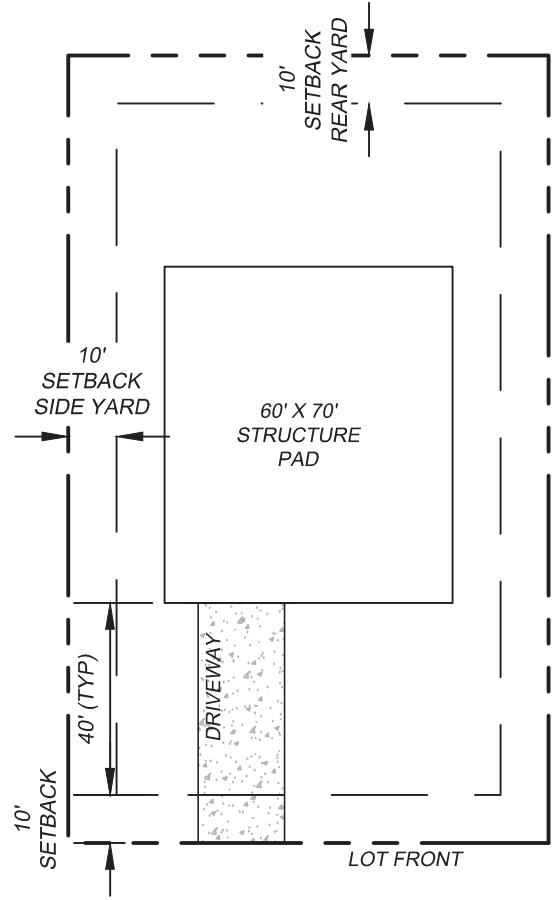
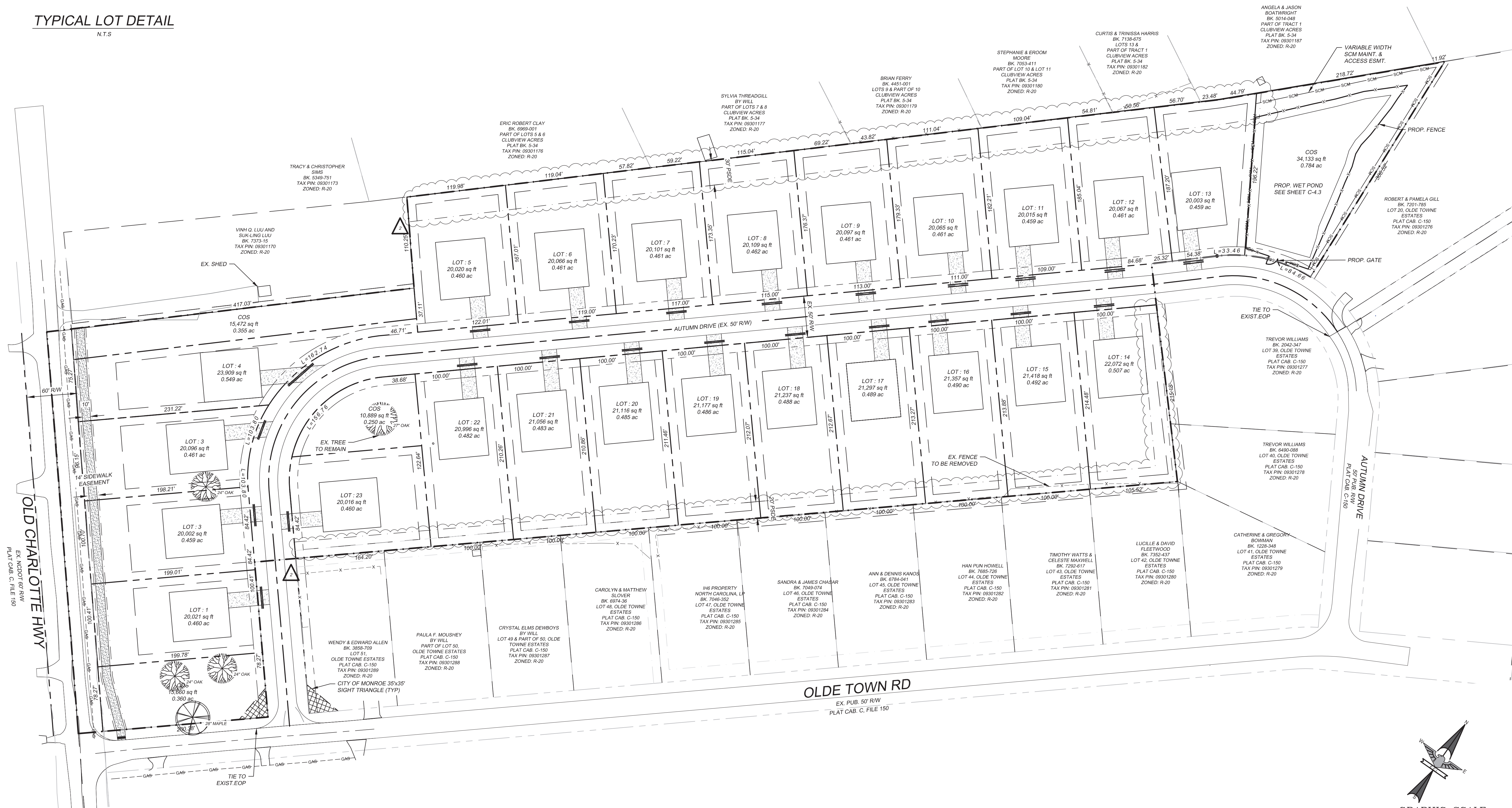


GENERAL NOTES

1. ALL ROADWAY CONSTRUCTION METHODS SHALL BE IN ACCORDANCE WITH THE CITY OF MONROE STANDARD SPECIFICATIONS AND DETAIL MANUAL AND THE NCDOT STANDARD SPECIFICATIONS FOR ROADS AND STRUCTURES, LATEST EDITION EXCEPT WHERE OTHERWISE NOTED.
2. DEVIATIONS FROM THE CITY OF MONROE STANDARD SPECIFICATIONS AND DETAIL MANUAL MUST BE CLEARLY NOTED ON THE PLAN AND LISTED BELOW. (THE DEVELOPER MUST REQUEST ANY DEVIATION FROM THE DETAIL MANUAL IN WRITING ALONG WITH JUSTIFICATION FOR REVIEW AND RECOMMENDATION BY STAFF.)
3. REFER TO CITY OF MONROE STANDARD DETAIL 02.01.02 ON SHEET C-6.0 FOR INTERNAL ROAD CROSS-SECTION.
4. DRIVEWAYS REQUIRED TO BE PAVED WITH ASPHALT OR CONCRETE FROM ROAD TO GARAGE, SHOULD ONE BE PROVIDED.



TYPICAL LOT DETAIL
N.T.S.



NO.	DATE	BY	ISSUE
1	6/29/2021	MCM	REVISED PER CITY OF MONROE COMMENTS
2	11/09/2021	MCM	REVISED PER CITY OF MONROE COMMENTS

AUTUMN DRIVE
CITY OF MONROE, MONROE TOWNSHIP,
FOR THE BENEFIT OF:
UNITED DEVELOPMENT GROUP, INC.,
2805 DICKENS STREET, SUITE 103
SAN DIEGO, CA 92106

DESIGNED BY	DRAWN BY	CHECKED BY
DPH	DPH	MCK
DATE	DATE	JOB NUMBER
AS SHOWN	03/11/2021	7295

C-2.0