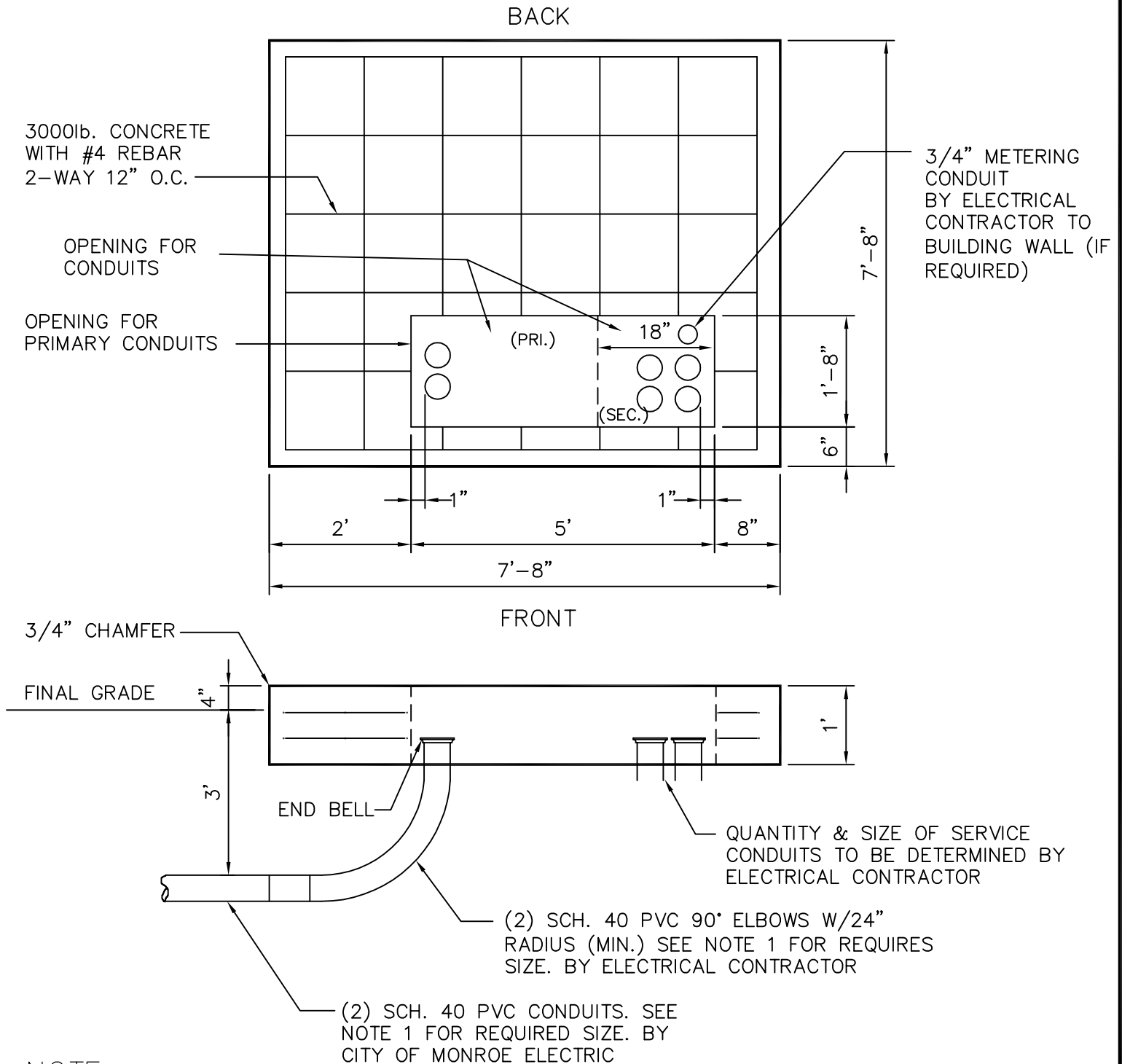


15 KV – 1500 KVA TO 2000 KVA 3-PHASE CONCRETE TRANSFORMER PAD DETAIL



NOTE:

1. 15kV = 4" CONDUIT
2. COMPACTED SUB GRADE BENEATH PAD.

ENG BY
F. PORTER

DATE
11/22/05

15 KV – 1500 KVA TO 2000 KVA
3-PHASE CONCRETE TRANSFORMER PAD DETAIL

CITY OF MONROE ENERGY SERVICES DEPARTMENT
P.O. BOX 69 MONROE, NC 28111-0069

SCALE
NTS

DRAWING NO.
1500 KVA